



GROWING OUR FUTURE  
FARM COLLABORATIVE CAPITAL CAMPAIGN





# THE FARM COLLABORATIVE

connected by food • guided by nature • rooted in place

ELEVATING OUR LOCAL FARMERS  
GLOBAL LEADERSHIP IN REVOLUTIONIZING OUR FOOD SYSTEM

## SUSTAINABILITY- REGENERATIVE MEASURES

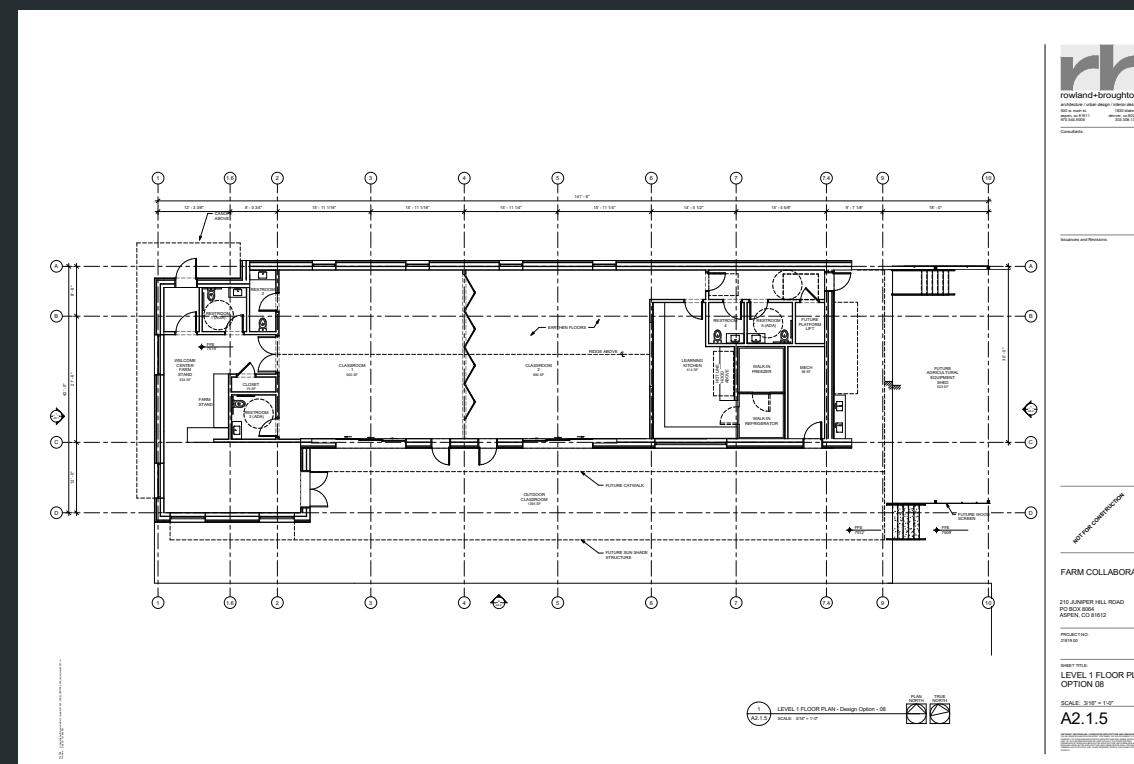
- WATER COLLECTION**  
GREEN ROOF / WATER CONSERVATION AND RECOVERY
- SOLAR ENERGY**  
ACTIVE & PASSIVE / THERMAL / PHOTOVOLTAIC
- EXTERIOR SHADING**  
SUMMER COOLING / ACTIVE SHADING DEVICES
- PASSIVE VENTILATION**  
ORIENTED TOWARD PREVAILING WINDS / CROSS VENTILATION
- THERMAL MASS**  
HEAT STORAGE / EARTHEN FLOOR & WALLS / ROOT CELLAR
- ALTERNATE ENERGY**  
METHANE DIGESTER / WIND HARVESTING / DAYLIGHTING

## PROJECT GOALS

- NET ZERO ENERGY USE
- NET ZERO WATER USE
- NET ZERO WASTE PRODUCTION
- SALVAGED AND HYPER-LOCAL MATERIALS
- DESIGNED FOR HISTORIC DESIGNATION IN 100 YEARS
- SUSTAINABILITY WELCOME AND INFO CENTER
- LEARNING AND CONFERENCE CENTER
- COMMUNITY INCUBATOR KITCHEN
- FARM STAND AND FOOD HUB



## SITE AND FLOOR PLAN





THE FARM COLLABORATIVE  
*farmcollaborative.org*





## OUR CAMPAIGN

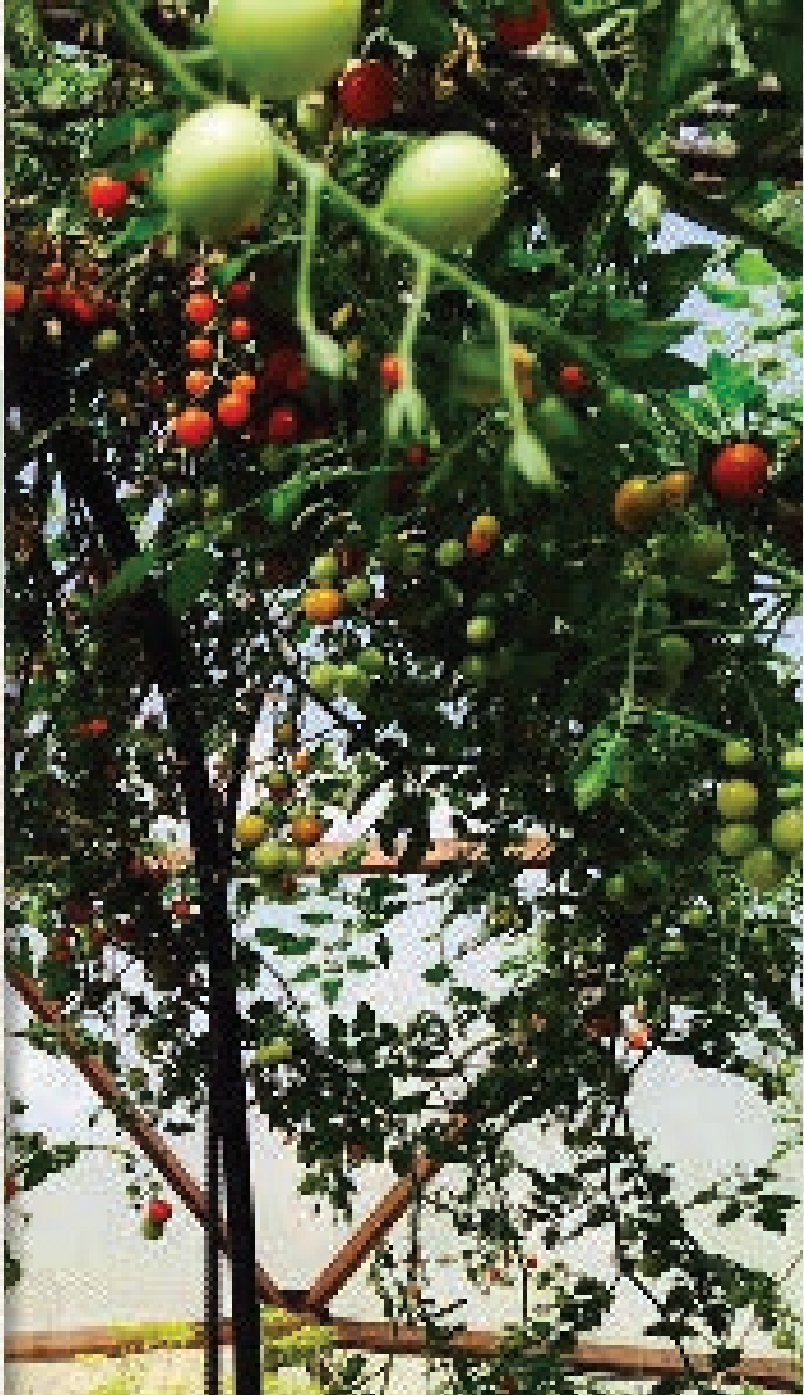
WE INVITE EXISTING AND NEW SUPPORTERS TO JOIN US IN FULFILLING THE MANY EXCITING GOALS OF GROWING OUR FUTURE



- Design and build the Farm Center
- Expand programming
- Increase food production
- Construct greenhouses
- Construct animal structures
- Launch a farmer housing program
- Develop a farmer-incubator training program
- Expand our equipment-lending library for local farmers
- Showcase innovative sustainable-agriculture techniques
- Establish Roaring Fork Valley's first U-pick operation
- Develop an agritourism program
- Create venue for farm to table meals
- Plant a carbon-drawing, heritage orchard
- Grow food for our community in a regenerative way



"The best time to plant a tree was 20 years ago. The next best time is today." - Chinese proverb



A FARM-TO-TABLE LIFESTYLE MOVEMENT IS CATCHING ON AND ENCOURAGING MORE LOCAL INVOLVEMENT IN AGRICULTURE. IN AN EFFORT TO EMBRACE THIS CULTURAL SHIFT, WE PLAN TO GROW FARMERS.



Inspired? We are...



## ALMOST THERE

We are grateful for the wonderful support that we have received to date. Generous donors have contributed nearly 70 percent toward our goal. Major donors will be recognized permanently within the new Farm Center; we welcome the opportunity to discuss any opportunities with you.

## COSTS

- Farm Center: program headquarters, learning kitchen, welcome center, farmers' market: \$4 million
- Incubator program and equipment / Mobile farmer housing library: \$500,000
  - Heritage orchard: \$250,000 • Agricultural improvements and Greenhouses: \$500,000
  - Capacity-building: staff, programming, operations: \$1.4 million
- TOTAL CAMPAIGN: \$6,700,000**

Naming opportunities at the new Farm Collaborative campus include:

- |           |   |
|-----------|---|
| \$2.2M    | Farm Center building  |
| \$500,000 | Learning kitchen, event center, farm store, heritage orchard, community farm park, event pavilion |
| \$250,000 | Equipment library, farmer-incubator field   |
| \$100,000 | Learning farm and greenhouse  |
| \$50,000  | Learning yurt, viewing platform, field classroom, loafing shed                                    |
| \$20,000  | Animal structures   |
| \$10,000+ | Field tipis, learning gardens, fire pit, garden patio   |

For more information on the campaign and to discuss how you can contribute, contact Farm Collaborative Executive Director Eden Vardy: 970.379.2323 or eden@thefarmcollaborative.org.



# THE FARM COLLABORATIVE

*connected by food • guided by nature • rooted in place*



*“A society grows great when old men  
plant trees whose shade they know  
they shall never sit in.”*



The Farm Collaborative Aspen, P.O. Box 8064, Aspen, Colorado 81612  
970.900.FARM (3276) • [www.thefarmcollaborative.org](http://www.thefarmcollaborative.org) • [eden@farmco.org](mailto:eden@farmco.org)